

Toilet Seat Covers

Standard: GS-1 Edition 6.4



WHAT GREEN SEAL CERTIFIES

Green Seal’s leadership standard means toilet seat covers are verified as safer for human health and the environment than similar products while delivering uncompromising performance.

PERFORMANCE OF GREEN

All Green Seal-certified products must demonstrate an effective level of performance via an objective, scientifically validated method conducted under controlled and reproducible laboratory conditions. Products must meet requirements for basis weight, tensile strength, and stretch and water absorbency set by the Technical Association of the Pulp and Paper Industry, or the International Organization for Standardization.

SCIENCE OF GREEN – HEALTH



RESTRICTIONS TO PREVENT ADVERSE HEALTH EFFECTS

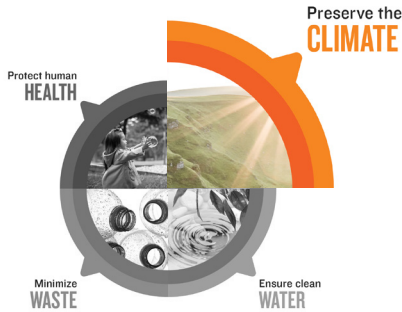
Ozone Depleting Compounds	Prohibited in papermaking process
Carcinogens	Prohibited above 100ppm
Mutagens	Prohibited above 100ppm
Reproductive Toxins	Prohibited above 100ppm
Chlorophenolic Biocides	Prohibited in papermaking process
Colorants	Prohibited as a functional ingredient in papermaking
Fragrances	Prohibited above 100ppm
Phthalates	Must not be intentionally added to packaging
Bisphenol A	Must not be intentionally added to packaging
Chlorinated Materials	Must not be intentionally added to packaging
Hexavalent Chromium	Prohibited above 100ppm and must not be intentionally added to packaging
Lead	Prohibited above 100ppm and must not be intentionally added to packaging
Selenium	Prohibited above 100ppm
Mercury	Must not be intentionally added to packaging
Cadmium	Must not be intentionally added to packaging

Toilet Seat Covers (CONT'D)

STANDARD: GS-1 EDITION 6.4



SCIENCE OF GREEN - ENVIRONMENT



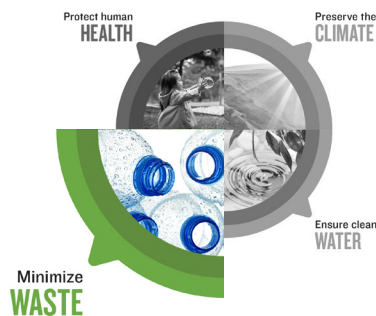
CRITERIA THAT HELP PRESERVE THE CLIMATE

Recycled Content	Product must be 100% recovered material, agricultural residue or combination of both
Post-Consumer Material	25% of recovered material must be post-consumer
Fresh Water Use	Limits on total water used during the papermaking process: no more than 19,250 gallons / ton of final product
Total Energy Use	Limits on total energy used during the papermaking process: no more than 17.0 millions BTUs / ton of final product



RESTRICTIONS TO PREVENT ADVERSE ENVIRONMENTAL EFFECTS

Aquatic Biodegradability	Each functional ingredient in papermaking process greater than 100 ppm must readily biodegrade
Optical Brighteners	Prohibited above 200ppm
Chlorine Free Processing	Chlorine is not added for bleaching, screening, de-inking or washing



RESTRICTIONS TO PREVENT WASTE

Primary & Secondary Packaging - Paper	Must be recyclable, and made from 100% recovered material
Primary & Secondary Packaging - Containerboard	Must be recyclable, and made from 30% recovered material
Primary & Secondary Packaging - Plastic	Must be recycle, source-reduced, contain 25% recovered material, or have an effective take-back program.
Recycling Labeling	Plastic packages must be marked with the appropriate Resin Identification Code. All packages must contain a label statement encouraging recycling of primary and secondary packaging

A GREEN YOU CAN TRUST

All Green Seal certified products must meet industry best practices for Quality and Safety.



Fragrances



Animal Testing



Labeling

Our standards are referenced by the leading green building certification programs.



Green Seal® is a global non-profit whose certification mark is a universal symbol that a product or service meets the highest benchmark of health and environmental leadership.

Learn more about our environmental leadership standards and 30,000+ certified products and services at GreenSeal.org.